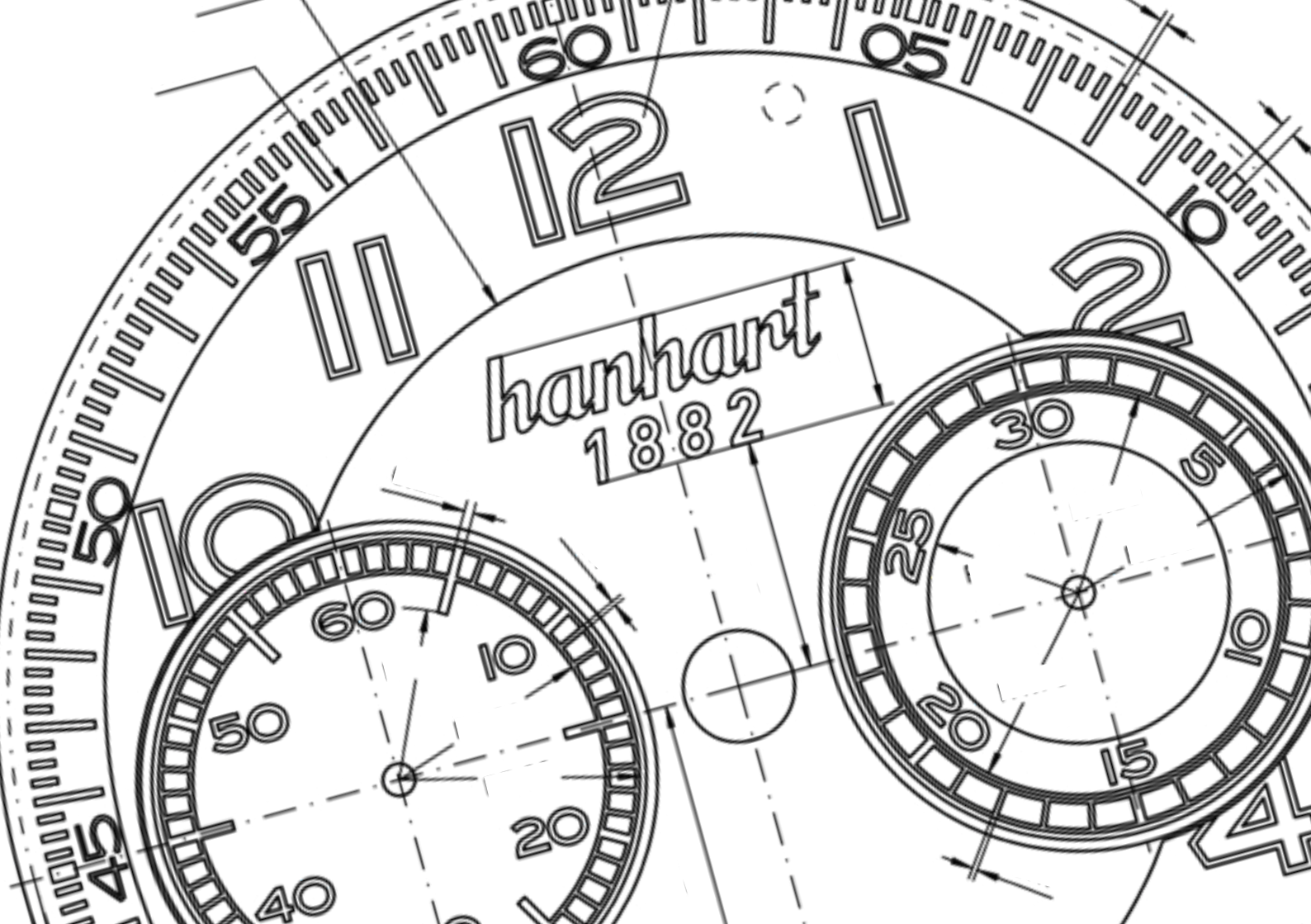




hanhart
CHRONOGRAPHEN 1882



2 ABOUT HANHART

8 PIONEER

- 12 417 ES
- 14 TwinDicator
- 16 MonoScope
- 18 TwinControl
- 20 MonoControl
- 22 Mk I
- 24 Mk II
- 26 TachyTele
- 28 One
- 30 Preventor9
- 32 Stealth 1882
- 44 Strap collection

82 CARE

83 SERVICE & WARRANTY

84 THE RED BUTTON

34 RACEMASTER

- 38 GT
- 40 GTF
- 42 GTM
- 44 Strap collection

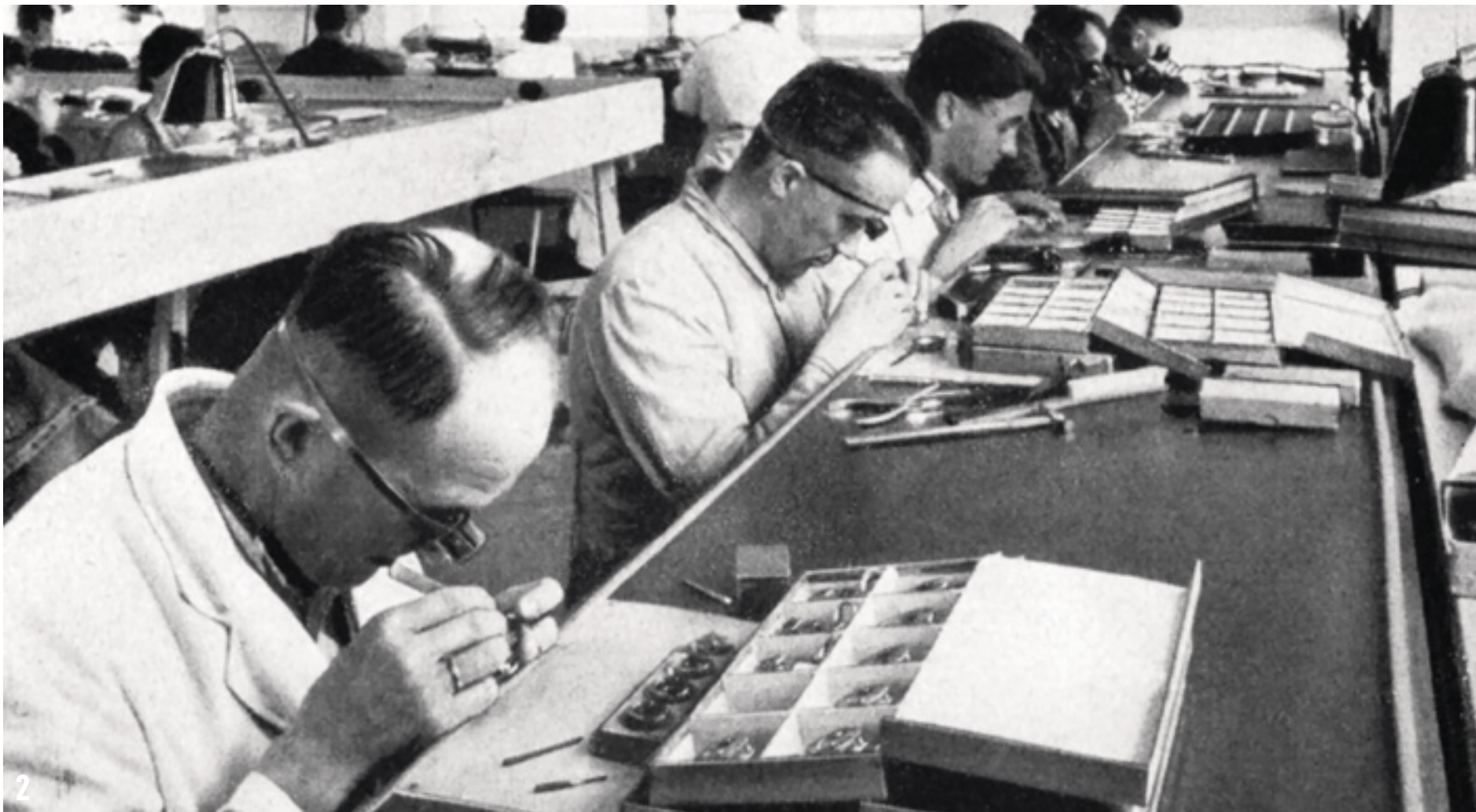
46 PRIMUS

- 50 Racer
- 54 Diver
- 58 Pilot
- 62 Desert Pilot
- 64 Strap collection

66 CLASSICTIMER

- 70 Stopwatches
- 76 Pocket Watches
- 78 Sets
- 80 Accessories

hanhart
CHRONOGRAPHEN 1882



HISTORY

1882

In 1882, the Swiss watchmaker Johann Adolf Hanhart founded his watch shop in the small town Diessenhofen before the company was relocated to Schwenningen in southern Germany in 1902. In the same year, the youngest Hanhart son Wilhelm (Willy) Julius was born, who created the first highly innovative era for the company in the 1920's.

The 1920s

Until the mid-twenties, stopwatches were produced exclusively in Switzerland and were accessible only at very high prices. In 1924, Willy Hanhart achieved a breakthrough for Hanhart as he produced the world's first affordable mechanical stopwatch and thus he pressed the start button for the leading company in the stopwatch sector which continues today.

The 1930s

Hanhart enlarges its product range with the first pocket and wrist watches, new and mechanically increasingly complex models came into production. As part of the expansion, a second factory in Gütenbach, in the German Black Forest, has been established in 1934, where the current company headquarters are located today. In 1938, the first Hanhart chronograph was produced in regular production, marking the beginning of a new era for Hanhart: The mono pusher chronograph "Calibre 40", today a coveted collector's item.

It was followed by the legendary pilot's chronographs "Calibre 41" and "TachyTele". Qualities such as first-class precision in a perfect shape already constituted the core values of the brand.

The 1940s

During World War II pilots and naval officers wore Hanhart chronographs. After the war, all business operations were shut down and dismantled and Willy Hanhart was physically detained. Upon his release, Willy Hanhart restarted production and rebuilt the workshops in Gütenbach, and the first production machines were acquired in exchange for existing wristwatches and movements. Additionally, watchmaker tools were located in places that had been used for hiding during the war. The production of chronographs started again in 1949.

The 1950s

The production ran at full speed, whereby Hanhart focused increasingly on manufacturing mechanical stopwatches and innovative products such as timers, battery-powered movements for clocks as well as alarm wristwatches. In 1952, the headquarters in Schwenningen were rebuilt. In the same year Hanhart exhibited at the today's Basel-World for the first time. The company had become the market leader for producing quality mechanical stopwatches.



The 1960s

Hanhart opened a third production facility in Neukirch, also in the German Black Forest in 1963. Every school and sports club in Germany used Hanhart stopwatches for timekeeping.

The 1970s

The age of quartz watches exploded in 1972. Hanhart designed a plastic moulding department and developed a quartz movement, which was hugely successful and sold in millions. Customers consisted of well-known companies, which used the movement for their own alarm clocks and watches. Hanhart also produced complete items including quartz movements on behalf of several business customers.

The 1980s

In the 80s, the first inexpensive quartz movements from Asia entered the market, and pricing pressure increased. Hanhart countered and developed a new affordable movement in 1981, the calibre 3305, which was placed into production in 1982. Approximately 40 million pieces of this new movement were sold. In 1983, Willy Hanhart's son in law Klaus Eble, who had entered the company in 1966, took over the Hanhart management.

The 1990s

The traditional craftsmanship of watchmaking was rediscovered in the .90s, as Hanhart returned to its roots. The company presented the legendary pilot's chronograph from 1939 as a carefully manufactured inspired commemorative timepiece in 1997

Limited to 2,500 pieces, this watch was sold out in record time.

Additional models followed and increasingly evolved into exclusive collector's items. The predecessors of the present "PIONEER" collection were born.

The 2000s

In 2004, Hanhart launched the limited model "Dornier by Hanhart". Two special editions marked the 125th anniversary in 2007: "Opus 41", a manual windup chronograph made of platinum and limited to 39 pieces, and "Spirit of Racing", a twin set including a flyback wrist watch and a stop watch. In 2008, the stopwatch „Tachymaster“ enthralled enthusiastic classic rally car drivers as a brand new innovative tool for distance measurement. This watch emphasized Hanhart's position as Europe's most important stopwatch manufacturer. The mechanical chronograph collection "PRIMUS" made its debut in 2009. This collection interprets Hanhart's traditional values of the highest precision and reliability in a progressive design.

The 2010s

At the BaselWorld 2010, Hanhart introduced the first models of the "PIONEER" collection, which is based on the design and technology of the legendary Hanhart aviator chronographs. To highlight the close connection to motorsport racing in the 60s and 70s, Hanhart launched the "RACEMASTER" collection in 2013, using HDSpro® to produce steel cases, which is 100 times more scratch resistant than conventional stainless steel.



HISTORY MEETS MODERNITY

In 1934, a second manufacturing facility was built as part of the expansion in Gütenbach, also in the German Black Forest as was the factory in Schwenningen.

Thus Hanhart laid the foundation for the production of the first legendary pilot's chronographs, which are even today appreciated and desired by watch lovers worldwide. The entire range of mechanical and electronic stopwatches as well as the chronographs are still produced in Gütenbach, Germany, the present company headquarters. In addition to the market leadership in the production of stopwatches, Hanhart has continually expanded the success of wristwatches. In order further advance the production of mechanical wristwatches, a new watchmaking workshop was designed and built in Gütenbach.

The new Hanhart Museum is adjacent to this new workshop. Featuring large and expansive windows, this museum also draws inspiration from the industrial ambience of the early 20th century, and connects Hanhart's long tradition with the technical know-how of today.

Every Wednesday afternoon visitors are taken on a journey through time back to the early years of the manufactory. Numerous collector's items, rare exhibits, and carefully preserved hand tools tell the history of Hanhart with over 130 years of tradition.

Groups of up to 15 people are also welcome outside the opening hours. A guided tour of the museum is included. To arrange a visit, please contact us in advance by phone at +49 7723 93 44 0 or send an email to info@hanhart.com.

Opening hours: Wednesday: 13:00 to 16:00

On public holidays: closed



PIONEER

A black and white photograph of a Pioneer aircraft, a small, single-engine, high-wing plane. The aircraft is shown from a low angle, emphasizing its sleek, aerodynamic design. The fuselage is covered in a series of horizontal ribs, giving it a ribbed appearance. The wings are also ribbed and extend from the upper fuselage. The tail section is visible on the right, featuring the number '271' and '882' painted on it. The aircraft is parked on a flat, open field under a cloudy sky. The overall tone is historical and technical.



PIONEER

PIONEER is our line of traditional pilot chronographs – designed for collectors, enthusiasts as well as old and new Hanhart fans

Even historical models of legendary pilot's chronographs from the 1930s, have not lost their charm. These watches still provoke true enthusiasm among watch collectors, primarily because of their significant history: Aviation chronographs were exposed to excessive vibrations, large variations in temperature and many other adverse conditions. Today these technical details contribute to the fascination of these pieces.

Modelled after these traditional pilot chronograph watches, the PIONEER series embodies a faithful tribute to Hanhart's long tradition and expertise in the field of mechanical precision timekeeping. At first glance, the distinctive characteristics of a classic Hanhart chronograph are immediately apparent: depending on the model the asymmetrical button arrangement, the red reset button, and the fluted rotating bezel and the timeless leather strap with satin riveting.

This unique combination of traditional design elements and modern build quality is embodied in each Hanhart PIONEER watch.



FEATURES

- Enlarged push button arrangement or single pusher conversion
- Flat bezel or fluted rotating bezel with red marker
- Super-LumiNova® coated numerals and hands
- Leather strap with rivets or stainless steel bracelet
- Screwed-down case back
- Red ceramic coated pusher (depending on the model)



PIONEER 417 ES

MOVEMENT

- Manual wound chronograph
- Sellita SW 510 M
- Symmetrical button arrangement
- 28.800 A/h, 4 Hz, 23 jewels

FUNCTIONS

- Small second
- 30-minute counter
- Bicompx Chronograph with central stop-second

CASE

- Stainless steel, satined/polished
- Diameter 42 mm, Height 13,3 mm
- Fluted rotating bezel, continuously rotatable, with red marking
- Anti-reflective convex sapphire glass, high-domed
- Screwed-down stainless steel case back, continuous serial number and engraving of the historical logo
- Water resistant to 10 bar/10 ATM, shockproof

DIAL

- Historical font
- Historical logo and bicompx layout
- Super-LumiNova® coated numerals and hands

STRAP

- Calfskin optional with underlay





PIONEER TwinDicator

MOVEMENT

- Automatic chronograph movement HAN4011
- Basis: ETA7750 with La Joux-Perret module
- Asymmetrical button arrangement
- 28,800 vibrations per hour, 4 Hz, 35 jewels
- Power reserve of min. 42 hours

FUNCTIONS

- Small second
- 12-hour counter
- 30-minute counter

CASE

- Stainless steel
- Diameter 45 mm, height 16 mm
- Large crown and red button
- Flat bezel or fluted rotating bezel
- Anti-reflective convex sapphire glass
- Screwed-down case back
- Water-resistant to 10 bar/10 ATM

DIAL

- Off-white or black
- Super-LumiNova® coated numerals and hands

STRAP

- Calfskin or stainless steel





PIONEER MonoScope

MOVEMENT

- Automatic chronograph movement HAN4212
- Basis: ETA7750 with La Joux-Perret module
- Mono-pusher conversion
- 28,800 vibrations per hour, 4 Hz, 31 jewels
- Power reserve of min. 42 hours

FUNCTIONS

- Small second
- 30-minute counter

CASE

- Stainless steel
- Diameter 45 mm, height 16 mm
- Large crown and red button
- Flat bezel or fluted rotating bezel
- Anti-reflective convex sapphire glass
- Screwed-down case back
- Water-resistant to 10 bar/10 ATM

DIAL

- Silver or black
- Super-LumiNova® coated numerals and hands

STRAP

- Calfskin or stainless steel





PIONEER TwinControl

MOVEMENT

- Automatic chronograph movement HAN3809
- Basis: ETA7750 with La Joux-Perret module
- Asymmetrical button arrangement
- 28,800 vibrations per hour, 4 Hz, 28 jewels
- Power reserve of min. 42 hours

FUNCTIONS

- Small second
- 30-minute counter
- Date

CASE

- Stainless steel
- Diameter 42 mm, height 15 mm
- Large crown and red button
- Flat bezel or fluted rotating bezel
- Anti-reflective convex sapphire glass
- Screwed-down case back
- Water-resistant to 10 bar/10 ATM

DIAL

- Off-white or black
- Super-LumiNova® coated numerals and hands

STRAP

- Calfskin or stainless steel





PIONEER MonoControl

MOVEMENT

- Automatic chronograph movement HAN3911
- Basis: ETA7750 with La Joux-Perret module
- Mono-pusher conversion
- 28,800 vibrations per hour, 4 Hz, 28 jewels
- Power reserve of min. 42 hours

FUNCTIONS

- Small second
- 30-minute counter
- Date

CASE

- Stainless steel
- Diameter 42 mm, height 15 mm
- Large crown and red button
- Flat bezel or fluted rotating bezel
- Anti-reflective convex sapphire glass
- Screwed-down case back
- Water-resistant to 10 bar/10 ATM

DIAL

- Off-white or black
- Super-LumiNova® coated numerals and hands

STRAP

- Calfskin or stainless steel





PIONEER Mk I

MOVEMENT

- Automatic chronograph movement HAN3601
Basis: ETA7753
- Mono-pusher conversion
- 28,800 vibrations per hour, 4 Hz, 27 jewels
- Power reserve of min. 42 hours

FUNCTIONS

- Small second
- 30-minute counter

CASE

- Stainless steel
- Diameter 40 mm, height 15 mm
- Large crown and red button
- Fluted rotating bezel
- Anti-reflective convex sapphire glass
- Screwed-down case back
- Water-resistant to 10 bar/10 ATM

DIAL

- Off-white or black
- Super-LumiNova® coated numerals and hands

STRAP

- Calfskin or stainless steel





PIONEER Mk II

MOVEMENT

- Automatic chronograph movement HAN3703
- Basis: ETA7753
- Asymmetrical button arrangement
- 28,800 vibrations per hour, 4 Hz, 27 jewels
- Power reserve of min. 42 hours

FUNCTIONS

- Small second
- 30-minute counter

CASE

- Stainless steel
- Diameter 40 mm, height 15 mm
- Large crown and red button
- Fluted rotating bezel
- Anti-reflective convex sapphire glass
- Screwed-down case back
- Water-resistant to 10 bar/10 ATM

DIAL

- Off-white or black
- Super-LumiNova® coated numerals and hands

STRAP

- Calfskin or stainless steel





PIONEER TachyTele

MOVEMENT

- Automatic chronograph movement HAN3703
- Basis: ETA7753
- Asymmetrical button arrangement
- 28,800 vibrations per hour, 4 Hz, 27 jewels
- Power reserve of min. 42 hours

FUNCTIONS

- Small second
- 30-minute counter
- Tachymeter & telemeter-scale

CASE

- Stainless steel
- Diameter 40 mm, height 15 mm
- Large crown and red button
- Fluted rotating bezel
- Anti-reflective convex sapphire glass
- Screwed-down case back
- Water-resistant to 10 bar/10 ATM

DIAL

- Off-white or black
- Super-LumiNova® coated numerals and hands

STRAP

- Calfskin or stainless steel





PIONEER One

MOVEMENT

- Automatic chronograph movement Sellita SW 200
- 28.800 A/h, 4 Hz, 26 jewels
- Power reserve of min. 38h

FUNKTIONEN

- Three hands
- Date

CASE

- Stainless steel
- Diameter 42 mm, height 12 mm
- Large crown
- Fluted bezel with red marking
- Inside anti-reflective sapphire glass
- Screwed-down case back
- Water-resistant to 10 bar/10 ATM

DIAL

- White, black, blue or grey
- Super-LumiNova® coated numerals and hands

STRAP

- Calfskin or stainless steel





PIONEER Preventor9

MOVEMENT

- Automatic chronograph movement HAN4112
- Basis: Sellita SW 200 with Dubois Dépraz module
- Asymmetrical button arrangement
- 28,800 vibrations per hour, 4 Hz, 30 jewels
- Power reserve of min. 38 hours

FUNCTIONS

- Small second

CASE

- Stainless steel
- Diameter 40 mm, height 12,15 mm
- Large crown and red button
- Flat bezel
- Internally anti-reflective convex sapphire glass
- Screwed-down case back
- Water-resistant to 10 bar/10 ATM

DIAL

- Off-white or black
- Super-LumiNova® coated numerals and hands

STRAP

- Calfskin or stainless steel





PIONEER Stealth 1882

EACH CASE VARIATION LIMITED TO 130 PIECES

MOVEMENT

- Automatic chronograph movement HAN4312
Basis: Sellita SW 500 with La Joux-Perret module
- Asymmetrical button arrangement
- 28,800 vibrations per hour, 4 Hz, 35 jewels
- Power reserve of min. 42 hours

FUNCTIONS

- Flyback function
- Small second
- 12-hour counter
- 30-minute counter
- Tachymeter & telemeter scale

CASE

- Stainless steel, black DLC-coated
- Diameter 45 mm, height 16 mm
- Large crown and red button
- Flat bezel or fluted rotating bezel
- Anti-reflective convex sapphire glass
- Screwed-down case back
- Water-resistant to 10 bar/10 ATM

DIAL & STRAP

- Black
- Super-LumiNova® coated numerals and hands
- Black calfskin with lower strap





RACEMASTER



RACEMASTER

RACEMASTER – For all with fuel in their blood

As a tribute to Hanhart's historical connection to motorsports where these watches were used as timing devices at many important races, the RACEMASTER models highlight these traditional designs and qualities: dynamic, cool and daring.

The distinctive case with a size of 45 millimetres, the unmistakable leather strap with a racing design and red inner lining, and the unique dial with anthracite centre and coloured minute ring, appeal not only to motorsport enthusiasts but to those who love watches inspired by those races. The sporty-technical design was inspired by historic racing cars, and a glimpse at the back of the chronograph reveals an elaborate engraving with crossed start and end racetrack flags.

The RACEMASTER collection shows off its modern technology by using the patented, 100 times more scratch-resistant casing steel HDSpro®, which makes the case especially hard, corrosion-resistant and free of nickel. The surface structure, which is three times harder than stainless steel, provides superior scratch resistance, robustness and value that makes a RACEMASTER a perfect companion through the strains of everyday life.



ADVANTAGES COMPARED TO 316L STEEL:

- Without alloying addition of nickel
- 3-times harder surface structure
- 100-times more scratch resistant
- High corrosion resistance



RACEMASTER GT

MOVEMENT

- Automatic chronograph movement HAN4011
- Basis: ETA7750 with La Joux-Perret module
- Asymmetrical button arrangement
- 28,800 vibrations per hour, 4 Hz, 35 jewels
- Power reserve of min. 42 hours

FUNCTIONS

- Small second
- 12-hour counter
- 30-minute counter
- Tachymeter scale

CASE

- HDS^{pro}® Stainless steel
- Diameter 45 mm, height 16 mm
- Large crown and red button
- Flat bezel
- Anti-reflective convex sapphire glass
- Screwed-down case back
- Water-resistant to 10 bar/10 ATM

DIAL

- Anthracite/white
- Super-LumiNova® coated numerals and hands
- Appliqué index markers

STRAP

- Calfskin "racing design" black/red



RACEMASTER GTF

MOVEMENT

- Automatic chronograph movement HAN4312
- Basis: Sellita SW 500 with La Joux-Perret module
- Asymmetrical button arrangement
- 28,800 vibrations per hour, 4 Hz, 34 jewels
- Power reserve of min. 42 hours

FUNCTIONS

- Flyback function
- Small second
- 12-hour counter
- 30-minute counter
- Tachymeter scale

CASE

- HDS^{pro}® Stainless steel
- Diameter 45 mm, height 16 mm
- Large crown and red button
- Flat bezel
- Anti-reflective convex sapphire glass
- Screwed-down case back
- Water-resistant to 10 bar/10 ATM

DIAL

- Anthracite/orange
- Super-LumiNova® coated numerals and hands
- Appliqué index markers

STRAP

- Calfskin "racing design" black/red



RACEMASTER GTM

MOVEMENT

- Automatic chronograph movement HAN4212
- Basis: ETA7750 with La Joux-Perret module
- Mono-pusher conversion
- 28,800 vibrations per hour, 4 Hz, 31 jewels
- Power reserve of min. 42 hours

FUNCTIONS

- Small seconds
- 30-minute counter
- Tachymeter scale

CASE

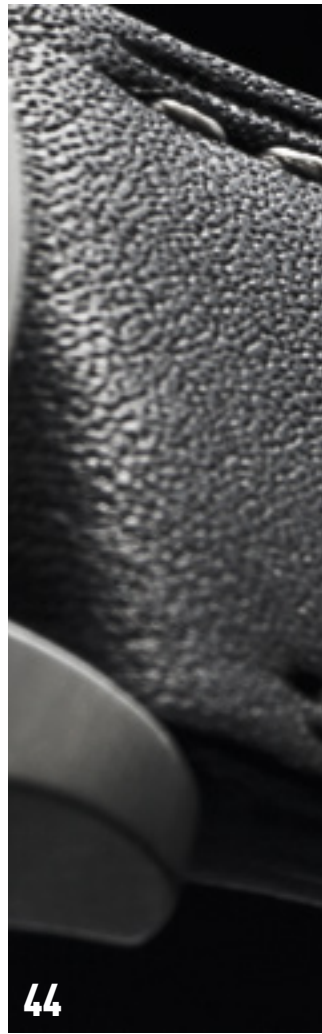
- HDS^{pro}® Stainless steel
- Diameter 45 mm, height 16 mm
- Large crown and red button
- Flat bezel
- Anti-reflective convex sapphire glass
- Screwed-down case back
- Water-resistant to 10 bar/10 ATM

DIAL

- Anthracite/blue
- Super-LumiNova® coated numerals and hands
- Appliqué index markers

STRAP

- Calfskin "racing design" black/red



PIONEER & RACEMASTER STRAP COLLECTION

To choose the right strap for your watch, you have to select the proper width. Here you can find the watch models and their matching widths.

LUG WIDTH	20 MM	21 MM
MODEL	MkI & MkII TachyTele Preventor9	MonoControl TwinControl

LUG WIDTH	22 MM	23 MM
MODEL	One	TwinDicator MonoScope Stealth1882

**REMOVABLE UNDERLAY
MADE OF CALF LEATHER**

The underlay for our calf-skin straps is available in all leather colours and for all widths. The removable leather underlay provides increased durability.



BUTTERFLY STAINLESS STEEL FOLDING CLASP

Fits for all **PIONEER** models with a lug width of 20 mm and 21 mm.



**CALFSKIN
BLACK
22**

**CALFSKIN
BLACK
22**

**CALFSKIN
BLUE
22**

**CALFSKIN
BLACK
20 | 21 | 23**

**CALFSKIN
LIGHT BROWN
20 | 21 | 23**

**CALFSKIN
DARK BROWN
20 | 21 | 23**

**CALFSKIN
RACING
23**

**CALFSKIN
BLACK DLC
23**

**STAINLESS
STEEL
20 | 21 | 23**

PRIMUS





PRIMUS

PRIMUS - Pure dynamics for all those who love life.

With design elements true to Hanhart's rich history in watchmaking the PRIMUS Collection adds a progressive slant to the overall look. The red reset button made of anodized aluminium and in the striking fluted bezel draw their inspiration from historic Hanhart watches.

These innovative chronographs are impressive for their size, grip and overall comfort. The massive, high-quality stainless steel case meets all requirements for a reliable, robust and attractively shaped watch. A strap made of the finest calfskin or vulcanised rubber ensures optimal comfort on the wrist. A screwed sapphire case back offers an insider's view of the fascinating play of the movement and the skeletonized rotor. All models of the PRIMUS selection contain a ETA7750 basic movement with La Joux-Perret module.

To sum it all up: If you want to own a watch featuring Hanhart's longstanding expertise implemented in a sporty and contemporary way, the PRIMUS is an excellent choice.



FEATURES

- Fluted bezel with red marker
- Large screw-down crown
- Depending on the model: Super-LumiNova® coated numerals and hands
- Finest calfskin strap or vulcanised rubber strap
- Sapphire glass case back
- Red anodized aluminium button
- Flexible lugs

PRIMUS Racer



MOVEMENT

- Automatic movement HAN3809
- 28,800 VPH, 4 Hz, 28 jewels
- Power reserve of min. 42 hours

FUNCTIONS

- Small second
- 30-minute counter
- Date

CASE

- Stainless steel or black DLC-coated stainless steel
- Diameter 44 mm, height 15 mm
- Internally anti-reflective convex sapphire glass
- Screwed case back with sapphire glass
- Water-resistant to 10 bar/10 ATM

DIAL

- Silver, anthracite or black
- Super-LumiNova® coated hands
- Polished appliqué numerals and indexes

STRAP

- Calfskin or vulcanised rubber
- Folding clasp made of stainless steel or DLC-coated stainless steel



PRIMUS Diver



MOVEMENT

- Automatic movement HAN3809
- 28,800 VPH, 4 Hz, 28 jewels
- Power reserve of min. 42 hours

FUNCTIONS

- Small second
- 30-minute counter
- Date

CASE

- Stainless steel or black DLC-coated stainless steel
- Fluted, unidirectional rotating bezel
- Diameter 44 mm, height 15 mm
- Internally anti-reflective convex sapphire glass
- Screwed case back with sapphire glass
- Water-resistant to 10 bar/10 ATM

DIAL

- Blue or black
- Super-LumiNova® coated hands, numerals and indexes

STRAP

- Vulcanised rubber
- Folding clasp made of stainless steel or DLC-coated stainless steel





PRIMUS Pilot

MOVEMENT

- Automatic movement HAN3809
- 28,800 VPH, 4 Hz, 28 jewels
- Power reserve of min. 42 hours

FUNCTIONS

- Small second
- 30-minute counter
- Date

CASE

- Stainless steel: polished, matt or black DLC-coated
- Diameter 44 mm, height 15 mm
- Internally anti-reflective convex sapphire glass
- Screwed case back with sapphire glass
- Water-resistant to 10 bar/10 ATM

DIAL

- Silver, brown, sand, blue or black
- Super-LumiNova® coated hands, numerals and indexes

STRAP

- Calfskin or textile
- Folding clasp made of stainless steel or DLC-coated stainless steel



PRIMUS Desert Pilot



MOVEMENT

- Automatic movement HAN3809
- 28,800 VPH, 4 Hz, 28 jewels
- Power reserve of min. 42 hours

FUNCTIONS

- Small second
- 30-minute counter
- Date

CASE

- Sandblasted stainless steel
- Diameter 44 mm, height 15 mm
- Internally anti-reflective convex sapphire glass
- Screwed case back with sapphire glass
- Water-resistant to 10 bar/10 ATM

DIAL

- Sand coloured
- Super-LumiNova® coated hands, numerals and indexes

STRAP

- Textile, sand coloured
- Folding clasp made of sandblasted stainless steel



PRIMUS Strap collection

VULCANISED RUBBER STRAPS

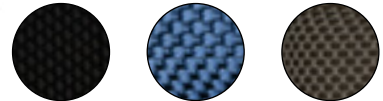
These rubber straps are designed for the PRIMUS Diver and PRIMUS Racer models. They feature the Hanhart logo and are designed for increased comfort.



TEXTILE STRAP



Also available in black, blue and green



FINEST CALFSKIN STRAPS

These classic leather straps are perfectly integrated with the progressive design of the PRIMUS collection. The straps feature white contrast stitching, which looks handsome on the wrist.



FOLDING CLASP - POLISHED STAINLESS STEEL



FOLDING CLASP - STAINLESS STEEL, BLACK DLC-COATED

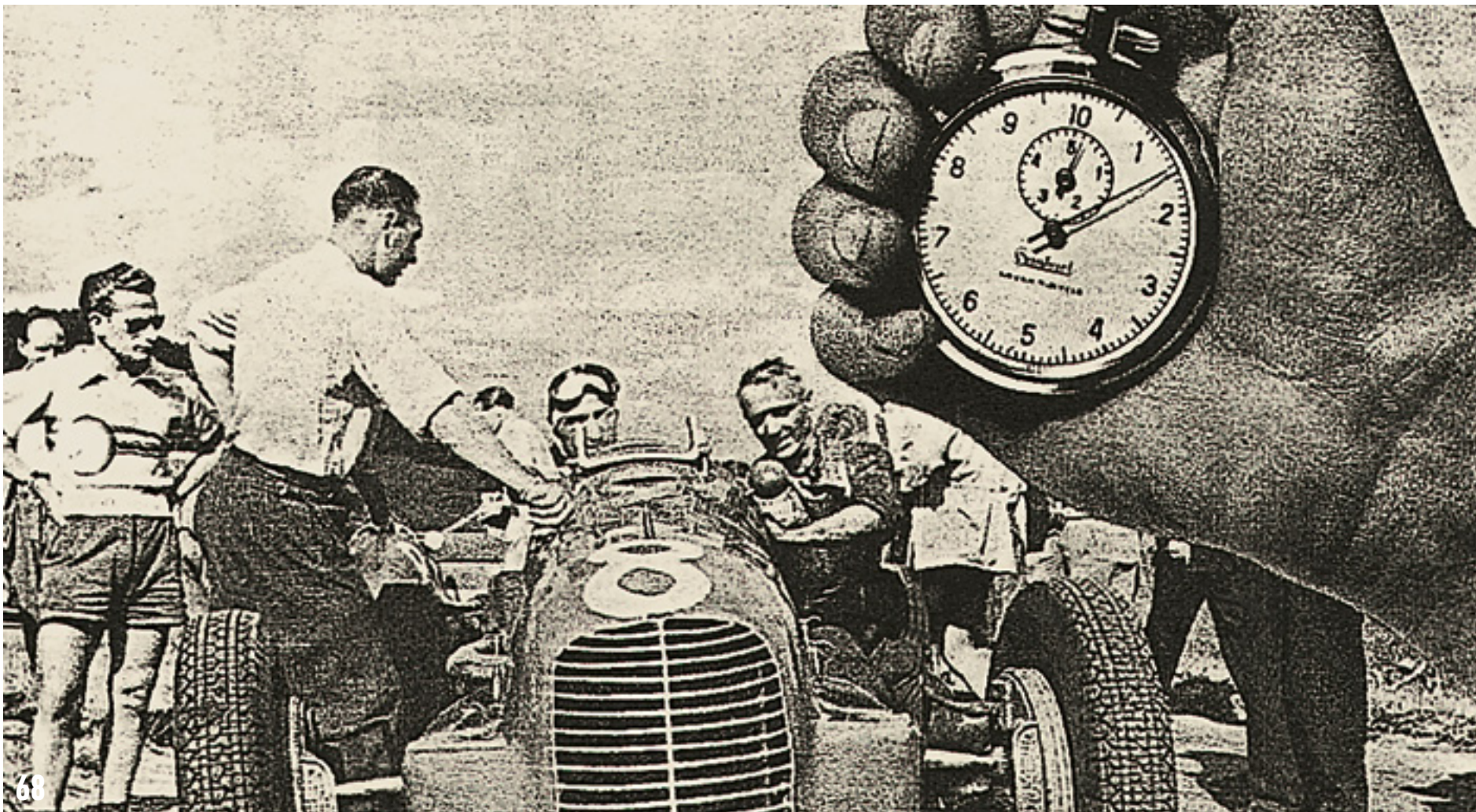


FOLDING CLASP - SANDBLASTED STAINLESS STEEL





CLASSICTIMER



CLASSICTIMER

CLASSICTIMER - fine collector's items for ambitious vintage car drivers and rally fans

Since Hanhart produced the first affordable stopwatch in 1924, the company quickly established itself as the most important German manufacturer and market leader for mechanical and electronic timepieces. Hanhart became a global player within the last century, when Hanhart stopwatches were considered as required equipment for every referee for major sports events and car racing competitions.

Today the high quality mechanical CLASSICTIMER collection has become coveted collector's items and highly esteemed rally companions for ambitious vintage car drivers and offer authentic time-keeping.

This exclusive collection offers a wide range of classic edition timers, split-seconds edition timers with or without flyback function, and edition timers with an extra-large jumping central minute and practical flyback functions. The collection is completed by pocket watches, which are based on the timeless design of the typical Hanhart pocket watches.

The chromium-plated brass case with traditional finish is polished and features a flat or fluted bezel with red marker and a red comfort pusher.

An elegant addition for any classic car:
All stopwatches and pocket watches can be installed easily into the dashboard plates for one, two or three watches. The „Slide in“ technology with its refined mechanics allows for easy installation and removal.

CLASSIC ADDITION TIMER

MOVEMENT

- Mechanical in-house manufacture movement
- 7 jewels

FUNCTIONS

- Addition timer
- 1/5-second timing
- 30-minute counter

CASE

- Chrome-plated brass, polished
- Flat bezel
- Red convenience button
- Mineral glass
- Diameter 55 mm
- Splash-proof

DIAL OPTIONS

- Black
- Beige



SPLIT-SECONDS ADDITION TIMER

MOVEMENT

- Mechanical in-house manufacture movement
- 9 jewels

FUNCTIONS

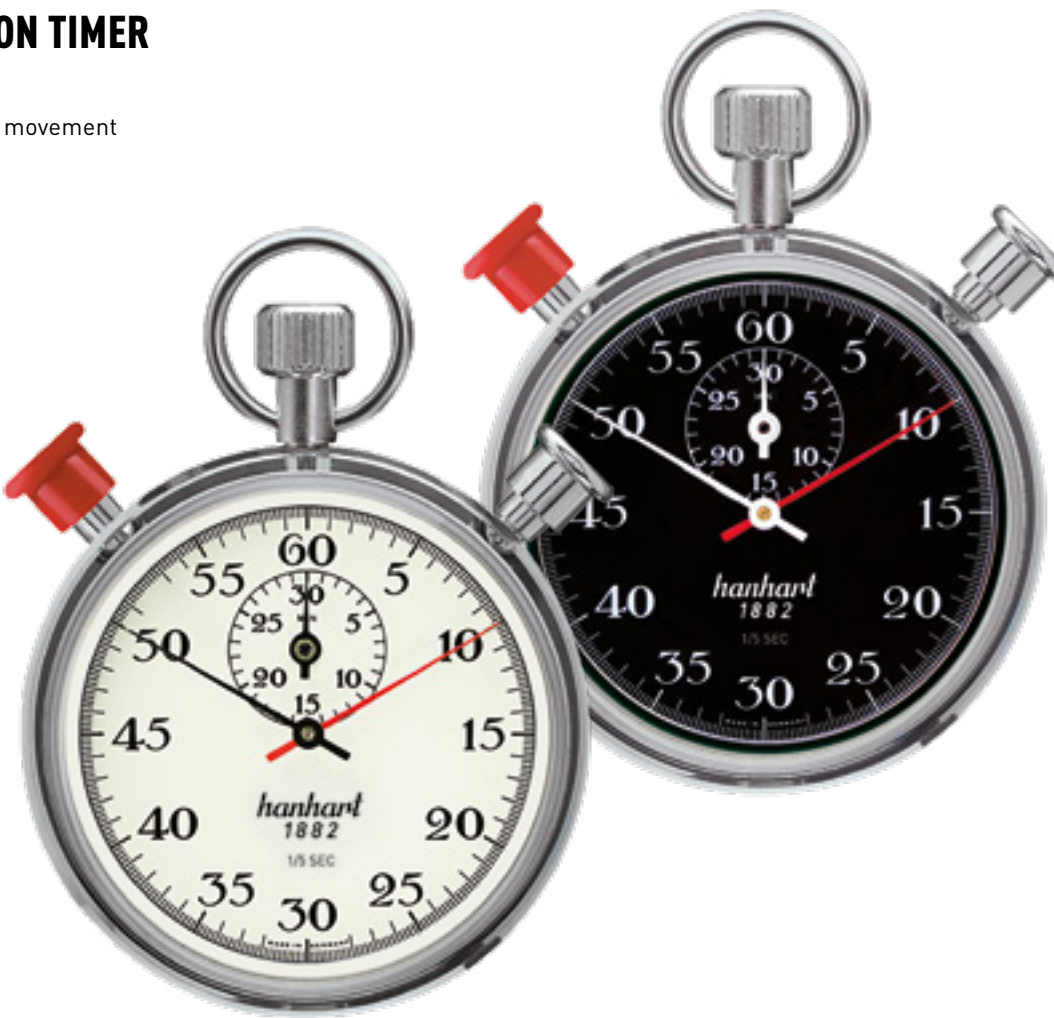
- Split-seconds addition timer
- 1/5-second timing
- 30-minute counter

CASE

- Chrome-plated brass, polished
- Flat bezel
- Red convenience button
- Mineral glass
- Diameter 55 mm
- Splash-proof

DIAL OPTIONS

- Black
- Beige



SPLIT-SECONDS ADDITION TIMER WITH FLYBACK

MOVEMENT

- Mechanical in-house manufacture movement
- Anchor escapement
- 9 jewels

FUNCTIONS

- Split-seconds addition timer
- Flyback function
- 1/5-second timing
- 30-minute counter

CASE

- Chrome-plated brass, polished
- Fluted rotating bezel
- Red convenience button
- Mineral glass
- Diameter 55 mm
- Splash-proof

DIAL OPTIONS

- Black
- Beige



„MEGA MINUTE“ ADDITION TIMER WITH FLYBACK

MOVEMENT

- Mechanical in-house manufacture movement
- Anchor escapement
- 7 jewels

FUNCTIONS

- Addition timer
- Flyback function
- 1/5-second timing
- Large sprung central minutes hand
- Measurement range up to 60 minutes

CASE

- Chrome-plated brass, polished
- Red convenience button
- Mineral glass
- Diameter 55 mm
- Splash-proof

OPTIONS

FLAT BEZEL

- Black
- Beige

FLUTED ROTATING BEZEL

- Black
- Beige



LONG-DISTANCE HOUR COUNTER

MOVEMENT

- Mechanical in-house manufacture movement
- Anchor escapement
- 11 jewels

FUNCTIONS

- 1/5-second timing
- Sprung central minutes hand
- 10-hour counter

CASE

- Chrome-plated brass, polished
- Red convenience button
- Mineral glass
- Diameter 55 mm
- Splash-proof

OPTIONS

FLAT BEZEL

- Black
- Beige

FLUTED ROTATING BEZEL

- Black
- Beige



POCKET WATCHES

MOVEMENT

- Manual winding movement Unitas 6497
- Anchor escapement
- 17 jewels

FUNCTIONS

- Hours & minutes
- Small second

CASE

- Chrome-plated brass, polished
- Mineral glass
- Diameter 55 mm
- Splash-proof

OPTIONS

FLAT BEZEL

- Black
- Beige

FLUTED ROTATING BEZEL

- Black
- Beige



POCKET WATCHES

MOVEMENT

- Manual winding movement Unitas 6497
- Anchor escapement
- 17 jewels

FUNCTIONS

- Hours & minutes
- Small second

CASE

- Black chrome-plated brass
- Mineral glass
- Diameter 55 mm
- Splash-proof

OPTIONS

FLAT BEZEL

- Black



TABLETOP-SET I

The Tabletop-Set consists of a tabletop stand, a dashboard plate for two watches, a stopwatch and a pocket watch.

SPLIT-SECONDS ADDITION TIMER WITH FLYBACK

Mechanical manufacture movement, 9 jewels, 1/5-second timing, 30-minute counter, fluted rotating bezel

POCKET WATCH „BOARD TIME“

Manual winding movement Unitas 6497, 17 jewels, diameter 55 mm, fluted rotating bezel

DASHBOARD-PLATE

Stainless steel polished

TABLETOP-STAND

With black leather



TABLETOP-SET II ALL BLACK

The Tabletop-Set consists of a tabletop stand, a dashboard plate for two watches, a stopwatch and a pocket watch.

SPLIT-SECONDS ADDITION TIMER WITH FLYBACK

Mechanical manufacture movement, 9 jewels, 1/5-second timing, 30-minute counter, flat bezel, black chrome-plated brass

POCKET WATCH „BOARD TIME“

Manual winding movement Unitas 6497, 17 jewels, diameter 55 mm, flat bezel, black chrome-plated brass

DASHBOARD-PLATE

Black chrome-plated brass

TABLETOP-STAND

With black leather



DASHBOARD PLATES

The stop watches and pocket watches can be freely combined and easily installed into a specially designed plate in the dashboard. The innovative „Slide-in“ technique ensures a convenient handling when installing and removing the watches from the dashboard plate.

OPTIONS

STAINLESS STEEL, POLISHED

1, 2, 3 watches

STAINLESS STEEL, BLACK CHROME PLATED

2 watches



TABLETOP STAND

Dashboard plates, along with their corresponding stopwatches and watches, can be easily installed on this practical table stand. It is made from solid stainless steel with a satin finish, and covered with leather.

OPTIONS

LEATHER BROWN

For 1 Watch Dashboard Plate

For 2 Watches Dashboard Plate

LEATHER BLACK

For 1 Watch Dashboard Plate

For 2 Watches Dashboard Plate



PREMIUM WRITING TABLET

This exclusive Hanhart embossed writing tablet is covered with leather and includes a high-quality ballpoint pen.

Size: 260 x 370 x 5 mm



RALLY COUNTDOWN DASHBOARD PLATE

This rally dashboard plate is suitable for all Hanhart stopwatches. The 135 and 185 stopwatches fit exactly, all other models can be attached with the included, thin felt strips.

Due to the large numbers of the bezels an optimal readability is given. The countdown bezels have a reverse printed number sequence of 60-0 seconds and are 360 ° freely rotatable and adjustable.

Size: 140 x 65 mm



CARE

WATER RESISTANCE

We recommend testing the water resistance of your watch on an annual basis. Please also remember to screw down your crown and to not push the chronograph pushers underwater.

MAGNETISM

Keep your watch away from magnetic fields such as microwaves, televisions, speakers, electronic and medical equipment and other areas of high magnetism.

SHOCKS

Avoid heavy jolts and falls. A Hanhart watch is a precision instrument: Repeated and sudden shocks can affect the accuracy and integrity of the movement.

STRAP

Straps made of stainless steel and rubber can be cleaned with a toothbrush and soapy water and dried off with a soft cloth. Leather should not make contact with oily substances, solvents and detergents. Take these steps to prevent discoloration and rapid aging of the strap.



HANHART SERVICE

Your watch in the best hands

To ensure the correct operation of your Hanhart watch, even after many years, we recommend regular servicing (overhauls) every three to six years. Your watch should only be serviced by authorized Hanhart dealers and service centres, or by the Hanhart Germany. We are available to answer questions about your Hanhart watch and to provide assistance at any time.

Contact:

E-Mail: service@hanhart.com

Telefon: +49 (0) 7723 93 44 0

Opening hours:

Monday – Thursday : 8 am – 12 pm & 1:30 pm – 16 pm

Friday: 8 am – 12 pm

THE HANHART WARRANTY

Your Hanhart watch was manufactured using the highest standards of watchmaking and with meticulous craftsmanship. Upon the completion of your watch, we then perform extensive testing and quality control. We are pleased to offer a limited international warranty which protects your watch from manufacturing defects. This warranty is valid for a period of two years from the original purchase date. Bracelets, straps, crystals as well as damage to the case or the movement as a result of neglect or everyday “wear and tear” are excluded from the limited warranty.





OUR TRADEMARK - the legend of the red button

He placed a kiss lovingly on her brow as she slept before quietly leaving the apartment. As he looked at his watch in the hangar, a smile flitted over his lips: she had painted the button with her red nail polish so that he would think of her always and return safe and sound ...

This is the legend behind the red button - the distinctive trademark that has characterized Hanhart since the company first introduced its chronographs in 1938. The button has been painted, in particular to prevent pilots from unintentionally zeroing the stop time.

FOLLOW US



@hanhart_watches

facebook.com/hanhart/

pinterest.com/hanhartwatches/

Hanhart Watches

CONTACT

Hanhart 1882 GmbH
Hauptstraße 33
78148 Gütenbach | Germany
www.hanhart.com
info@hanhart.com

hanhart
CHRONOGRAPHEN 1882